

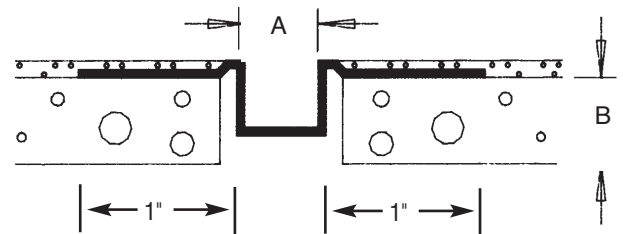
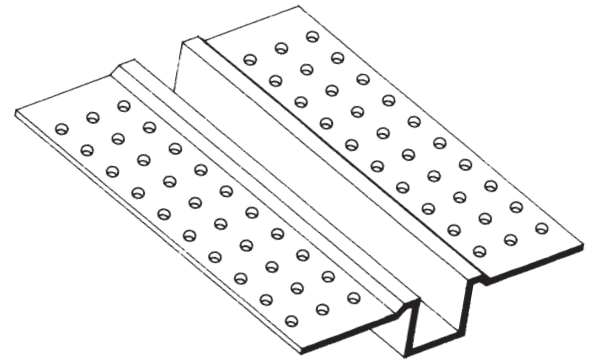
Drywall Accessories

Section: 09260

Drywall Reveal

Product Number	Dimension A	Dimension B	Pieces Per Box
225	1/2" (13 mm)	Designed for 1/2" (13 mm) or 5/8" (16 mm) drywall applications.	30
226	1" (25 mm)		35
227	3/4" (19 mm)		35
228	3/8" (10 mm)		30
229	5/8" (16 mm)		35
235	1-1/2" (38 mm)	Large and small holes in hole pattern on flange.	30
236	2" (51 mm)		30
237	3" (76 mm)	No holes in flange.	20
239	4" (102 mm)	No holes in flange.	20

10' (3 m) Lengths



Application: Drywall Reveal

Perforated flanges are placed on top of separated sheets of sheathing board with "U" channel placed in separate channel. Has built-in stops to ensure proper thickness of base and finish.

Specification:

Drywall Reveal shall be Plastic Components, Inc. #_____. All drywall accessories shall conform to ASTM standards D3678 and C1047. All products shall be third party tested to meet ASTM standard D4216 and be Canadian Code Compliant. Finish compatible with drywall mud and all paint finishes. They shall be used where specified by the architect and installed per industry standards.